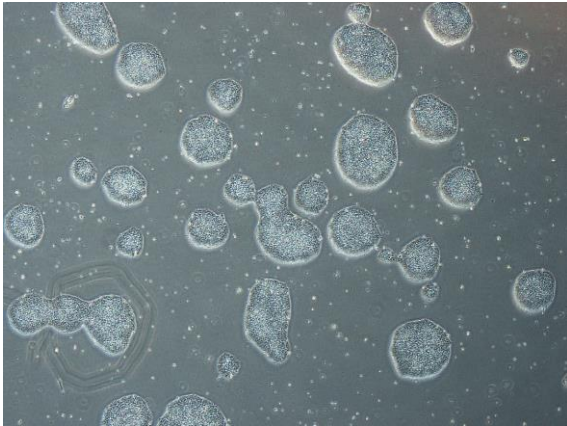
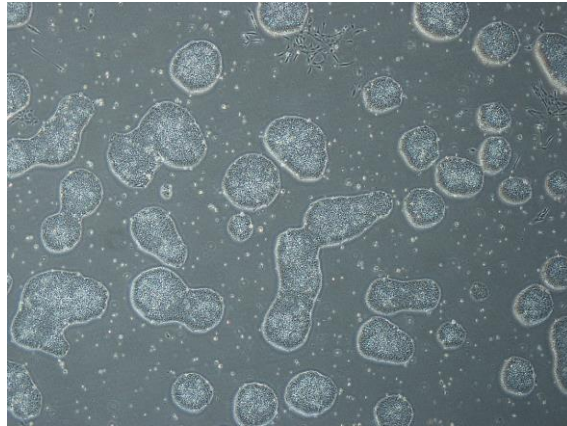


【 CiRA-j-1515 】 Morphology of iPSC colonies

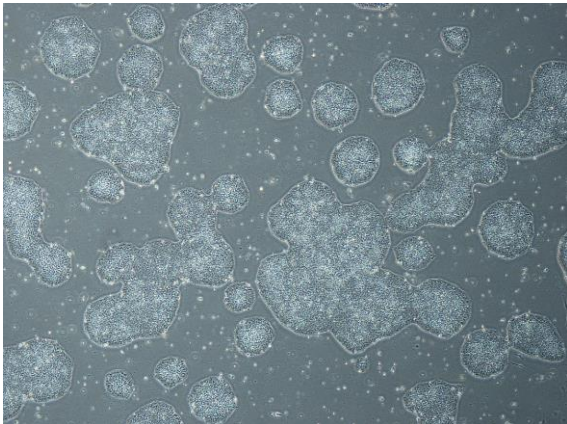
CiRA-j-1515-A: passage-3



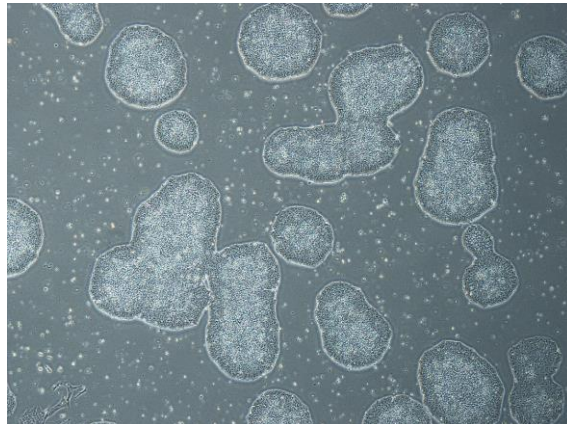
CiRA-j-1515-B: passage-3



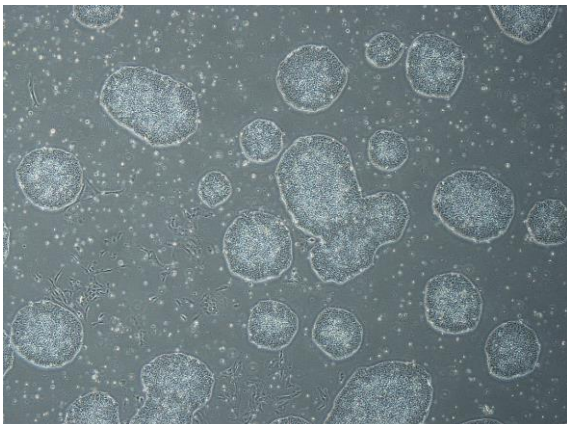
CiRA-j-1515-C: passage-3



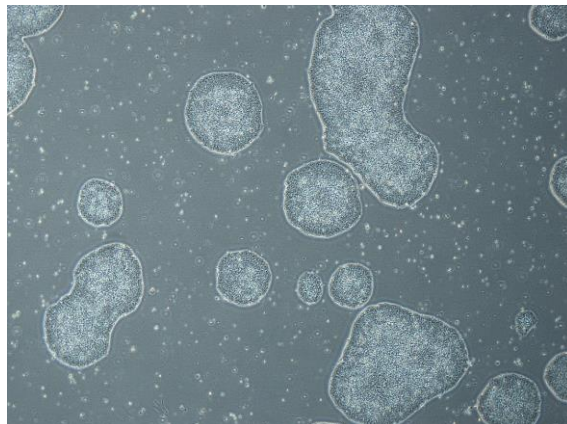
CiRA-j-1515-D: passage-3



CiRA-j-1515-E: passage-3



CiRA-j-1515-F: passage-3



(All images were captured at 4x magnification)